



PROJECT FOCUS

To restructure vast amounts of data collected from numerous states and higher education institutions to improve efficiencies in data collection, querying, analyses, and reporting.

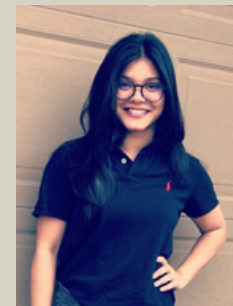
DELIVERABLES

- Restructured data collection templates
- Restructured database
- User guide for navigating new database framework and data collection templates



The Charles A. Dana Center at The University of Texas at Austin works to dismantle barriers in education systems to ensure all students—especially those from diverse backgrounds—have equitable access to an excellent education. Its team works across the education spectrum, from developing and delivering innovative curriculum and professional learning, to catalyzing the evolution of systems, structures, and policies.

CONNECT FELLOW



SHWETA SHAMBHAVI
 MASTER'S CANDIDATE
 SCHOOL OF INFORMATION