



PROJECT FOCUS

.....

To support ECHO with articulating the connections between homelessness and socioeconomic factors, including the availability of affordable housing and social safety net programs (like section 8 vouchers).

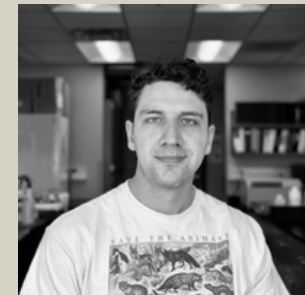
KEY ACTIVITIES & DELIVERABLES

-
- Collaborated with the ECHO team to develop a list of socioeconomic variables connected with homelessness
 - Identified publicly available data sets containing socioeconomic data from Austin and other U.S. cities similar to Austin; combined data sets
 - Conducted analysis on data sets and developed visualizations
 - Summarized findings into an issue brief to be used for policy communication purposes



The Ending Community Homelessness Coalition (ECHO) is the lead agency that plans and implements community-wide strategies to end homelessness in Austin and Travis County. It is the backbone for the homeless services system and works closely with nonprofits and government agencies to coordinate assistance and housing for people experiencing homelessness in the community.

CONNECT FELLOW



STEVEN GUERIN
 DOCTORAL CANDIDATE
 COLLEGE OF PHARMACY