



PROJECT FOCUS

To support TX-CTRN with making programming changes and data quality improvement in REDCap as it prepares for planned expansion of activities in the network for the next two years.

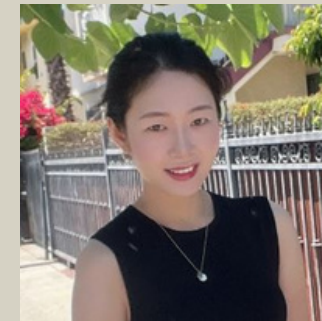
KEY ACTIVITIES & DELIVERABLES

- Collaborated with the Data Warehousing team to establish a robust data collection pipeline on RedCap for a complex, large-scale multi-node research project
- Communicated with clinician team to identify and address pain points in existing pipelines; made updates to optimize the RedCap project
- Supported the Data Warehousing team and network site Clinician teams with data curation, validation, and assistance to TX-CTRN investigators in translating research questions into actionable insights via generating comprehensive data summaries



Part of the The Texas Child Mental Health Care Consortium (TCMHCC), the Childhood Trauma Research Network (CTRN) project is a multi-center research network involving all the academic medical centers in Texas supporting a longitudinal network participant registry to characterize systems and interventions and to examine statewide population health outcomes for children who have experienced traumatic life events. It has been active since the fall of 2020 and has over 1600 participants.

CONNECT FELLOW



KYOUNGEUN (CAY) LEE
 DOCTORAL CANDIDATE
 COLLEGE OF LIBERAL ARTS